

MS1 - Type 211

SPECIFICATION SHEET

DESIGN & PROTOCOL COMPLIANCE

NATIONAL HIGHWAYS:

- ✓ TR1100
- ✓ TR2652

- ✓ TR2653
- ✓ TR2654
- ✓ TR2655

UK STANDARDS:

- ✓ BS EN 12966
- ✓ BS EN 12899

- ✓ BS 7671
- ✓ UMSUG

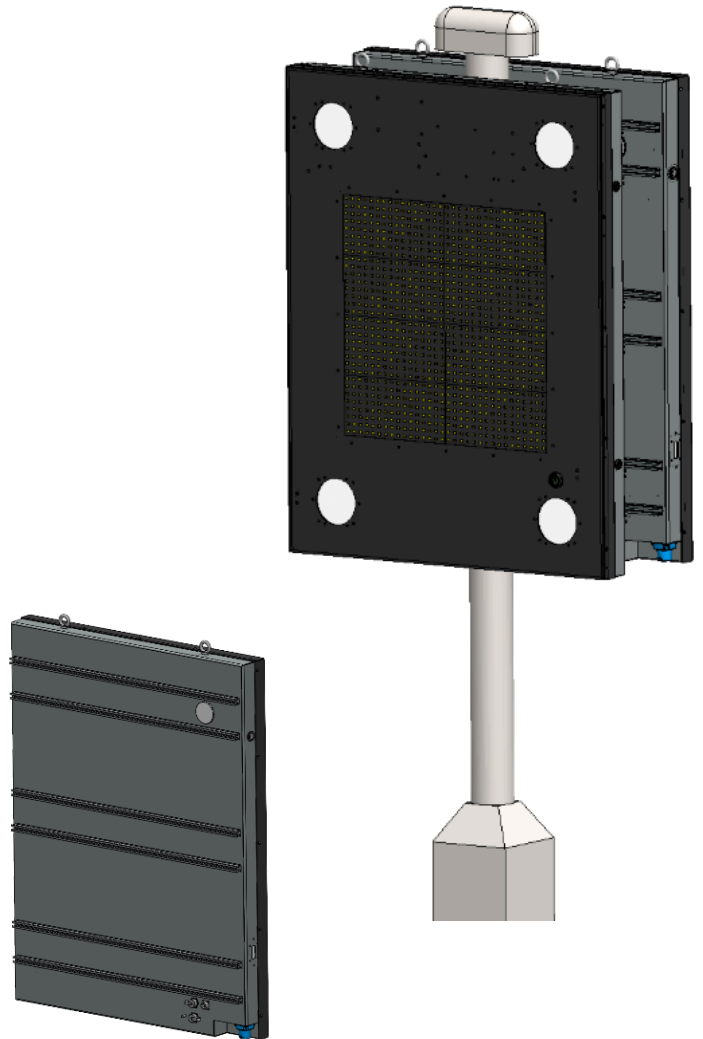
KEY FEATURES

LED display utilises full-colour RGB panels (SMD 3-in-1 Lens Modules) for displaying dynamic information to motorists.

This high-resolution, multi-colour availability provides enhanced viewing clarity with excellent control over a broad spectrum of colours.

The J1-LED MS1 is designed and manufactured to the latest National Highways specifications integrating the new NMCS2 over IP for improved communications services while retaining the NMCS2 over RS482 for legacy installations.

The J1-LED MS1 is designed to be mounted to new and legacy Type 75 post installations. The structure located on the rear of the enclosure uses the same mounting points as the legacy MCX0201 X-Frame.



SPECIFICATIONS

PRODUCT	MS1 - TYPE 211
MODEL NO	J1-D-1104-MA-100
RESOLUTION	32 X 32
PIXEL PITCH	20mm
DISPLAY SIZES	MAIN DISPLAY: 640mm X 640mm 4X DUAL COLOUR LANTERNS: 125mm
OVERALL ENCLOSURE SIZE	1295mm (H) X 1000mm (W) X 135mm (D)
ESTIMATED MASS	44kg
CONTINUOUSLY VARIABLE DIMMING LEVELS	YES
ENCLOSURE MATERIAL	MARINE-GRADE ALUMINIUM
INGRESS PROTECTION	IP65

RJ45 (NMCS2 OVER IP) / RJ45 (DIAGNOSTICS) / RS482 (NMCS2 OVER RS482)



MS1 - Type 211

SPECIFICATION SHEET

LED DISPLAY PANEL	SMD 3-IN-1 FULL-COLOUR RGB LENS MODULES
OPERATING TEMP	-15°C TO +70°C
MOUNTING ARRANGEMENT	TO SUIT A TYPE 75 CENTRAL RESERVATION POST
CONTROL SYSTEMS	NATIONAL HIGHWAYS TELECOMMUNICATIONS NETWORK (NMSC2 & RMAS)

PLEASE NOTE MOST DETAILS CAN BE AMENDED BY J1-LED'S IN-HOUSE ENGINEERING TEAM TO SUIT YOUR PROJECT



MS1 - Type 212

SPECIFICATION SHEET

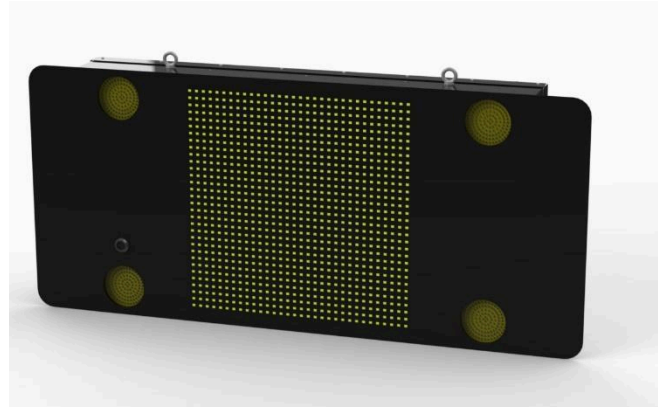
DESIGN & PROTOCOL COMPLIANCE

NATIONAL HIGHWAYS:

- ✓ TR1100
- ✓ TR2652
- ✓ TR2653
- ✓ TR2654
- ✓ TR2655

UK STANDARDS:

- ✓ BS EN 12966
- ✓ BS EN 12899
- ✓ BS 7671
- ✓ UMSUG



KEY FEATURES

LED display utilises full-colour RGB panels (SMD 3-in-1 Lens Modules) for displaying dynamic information to motorists.

This high-resolution, multi-colour availability provides enhanced viewing clarity with excellent control over a broad spectrum of colours.

The J1-LED MS1 is designed and manufactured to the latest National Highways specifications integrating the new NMCS2 over IP for improved communications services while retaining the NMCS2 over RS482 for legacy installations.

The J1-LED MS1 is designed to be mounted to new and legacy gantry installations. The structure located on the rear of the enclosure uses the same mounting points as the legacy MCX0043 X-Frame.



SPECIFICATIONS

PRODUCT	MS1 - TYPE 212
MODEL NO	J1-D-1104-MA-200
RESOLUTION	32 X 32
PIXEL PITCH	20mm
DISPLAY SIZES	MAIN DISPLAY: 640mm X 640mm 4X DUAL COLOUR LANTERNS: 125mm
OVERALL ENCLOSURE SIZE (MM)	1595mm (W) X 715mm (H) X 215mm (D)
ESTIMATED MASS (KG)	45kg
CONTINUOUSLY VARIABLE DIMMING LEVELS	YES
ENCLOSURE MATERIAL	MARINE-GRADE ALUMINIUM



MS1 - Type 212

SPECIFICATION SHEET

POWER SUPPLY	230V AC
LED DISPLAY PANEL	SMD 3-IN-1 FULL-COLOUR RGB LENS MODULES
OPERATING TEMP	-15°C TO +70°C
MOUNTING ARRANGEMENT	TO SUIT A STANDARD BALL JOINT GANTRY MOUNT
CONTROL SYSTEMS	NATIONAL HIGHWAYS TELECOMMUNICATIONS NETWORK (NMCS2 & RMAS)

PLEASE NOTE MOST DETAILS CAN BE AMENDED BY J1-LED'S IN-HOUSE ENGINEERING TEAM TO SUIT YOUR PROJECT



MS1 - Type 213

SPECIFICATION SHEET

DESIGN & PROTOCOL COMPLIANCE

NATIONAL HIGHWAYS:

- ✓ TR1100
- ✓ TR2652
- ✓ TR2653
- ✓ TR2654
- ✓ TR2655

UK STANDARDS:

- ✓ BS EN 12966
- ✓ BS EN 12899
- ✓ BS 7671
- ✓ UMSUG

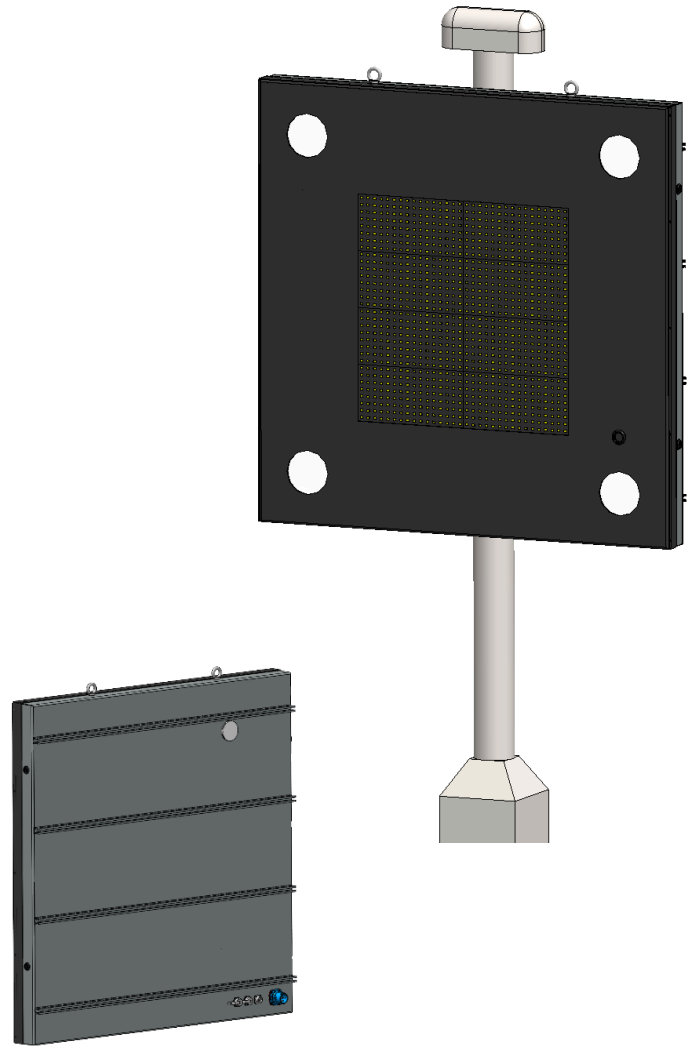
KEY FEATURES

LED display utilises full-colour RGB panels (SMD 3-in-1 Lens Modules) for displaying dynamic information to motorists.

This high-resolution, multi-colour availability provides enhanced viewing clarity with excellent control over a broad spectrum of colours.

The J1-LED MS1 is designed and manufactured to the latest National Highways specifications integrating the new NMCS2 over IP for improved communications services while retaining the NMCS2 over RS482 for legacy installations.

The J1-LED MS1 is designed to be mounted to new and legacy Type 75 post installations. The structure located on the rear of the enclosure uses the same mounting points as the legacy MCX0202 X-Frame.



SPECIFICATIONS

PRODUCT	MS1 - TYPE 213
MODEL NO	J1-D-1104-MA-300
RESOLUTION	32 X 32
PIXEL PITCH	20mm
ACTIVE DISPLAY SIZE	MAIN DISPLAY: 640mm X 640mm 4X DUAL COLOUR LANTERNS: 125mm
OVERALL ENCLOSURE SIZE	1250mm (H) X 1250mm (W) X 160mm (D)
ESTIMATED MASS (KG)	45kg
CONTINUOUSLY VARIABLE DIMMING LEVELS	YES
ENCLOSURE MATERIAL	MARINE-GRADE ALUMINIUM
INGRESS PROTECTION	IP65

RM15 (NMCS2 OVER IP) / RM15 (DIAGNOSTICS) / RM105 (NMCS2 OVER RS482)



MS1 - Type 213

SPECIFICATION SHEET

LED DISPLAY PANEL	SMD 3-IN-1 FULL-COLOUR RGB LENS MODULES
OPERATING TEMP	-15°C TO +70°C
MOUNTING ARRANGEMENT	TO SUIT A TYPE 75 ON RAMP POST
CONTROL SYSTEMS	NATIONAL HIGHWAYS TELECOMMUNICATIONS NETWORK (NMCS2 & RMAS)

PLEASE NOTE MOST DETAILS CAN BE AMENDED BY J1-LED'S IN-HOUSE ENGINEERING TEAM TO SUIT YOUR PROJECT

