

# Advanced Motorway Indicator (AMI)

## SPECIFICATION SHEET

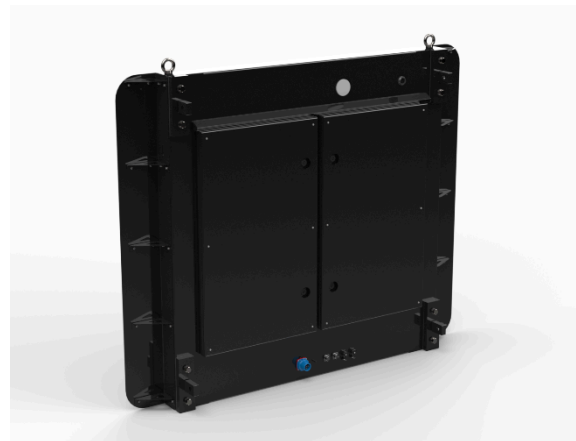
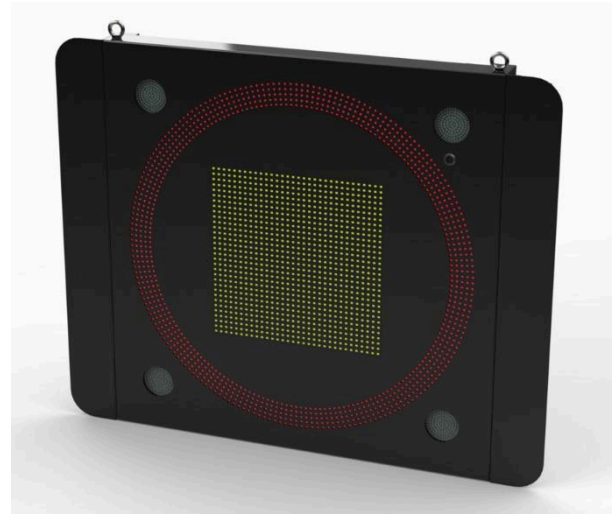
### DESIGN & PROTOCOL COMPLIANCE

#### NATIONAL HIGHWAYS:

- ✓ TR1100
- ✓ TR2652
- ✓ TR2653
- ✓ TR2654
- ✓ TR2656

#### UK STANDARDS:

- ✓ BS EN 12966
- ✓ BS EN 12899
- ✓ BS 7671
- ✓ UMSUG



### KEY FEATURES

LED display utilises full-colour RGB panels (SMD 3-in-1 Lens Modules) for displaying dynamic information to motorists.

This high-resolution, multi-colour availability provides enhanced viewing clarity with excellent control over a broad spectrum of colours.

The J1-LED AMI is designed and manufactured to the latest National Highways specifications integrating the new NMCS2 over IP for improved communications services while retaining the NMCS2 over RS482 for legacy installations.

The J1-LED AMI is designed with an interchangeable mounting brackets therefore allowing for seamless installation on new and existing gantries.

### SPECIFICATIONS

PRODUCT	ADVANCED MOTORWAY INDICATOR (AMI)
MODEL NO	J1-D-1110-MA-100
RESOLUTION	32 X 32
PIXEL PITCH	20mm
DISPLAY SIZES	MAIN DISPLAY: 640mm X 640mm 4X DUAL COLOUR LANTERNS: 125mm RED RING: 1300mm OUTER DIAMETER
OVERALL ENCLOSURE SIZE	1480mm (H) X 1840mm (W) X 165mm (D)
ESTIMATED MASS	90kg
CONTINUOUSLY VARIABLE DIMMING LEVELS	YES
ENCLOSURE MATERIAL	MARINE-GRADE ALUMINIUM
INGRESS PROTECTION	IP65
COMMUNICATIONS	RS485 (NMCS2 OVER IP) / RS485 (DIAGNOSTICS) / RS485 (NMCS2 OVER RS485)



# Advanced Motorway Indicator (AMI)

## SPECIFICATION SHEET

LED DISPLAY PANEL	SMD 3-IN-1 FULL-COLOUR RGB LENS MODULES (MAIN DISPLAY)
OPERATING TEMP	-15°C TO +70°C
MOUNTING ARRANGEMENT	INTERCHANGABLE BRACKETS TO SUIT NEW AND LEGACY INSTALLATIONS
CONTROL SYSTEMS	NATIONAL HIGHWAYS TELECOMMUNICATIONS NETWORK (NMCS2 & RMAS)

*PLEASE NOTE MOST DETAILS CAN BE AMENDED BY J1-LED'S IN-HOUSE ENGINEERING TEAM TO SUIT YOUR PROJECT*

